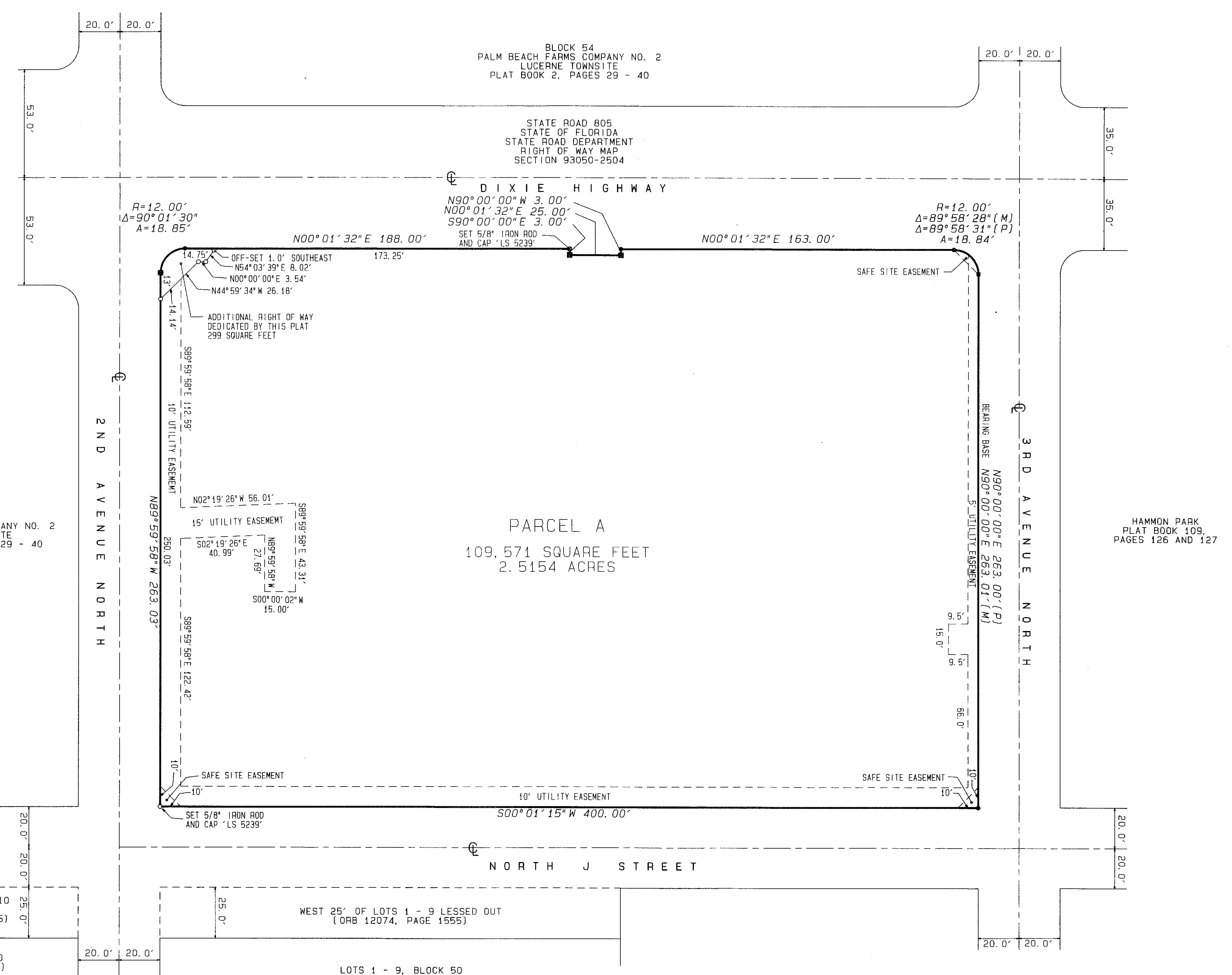
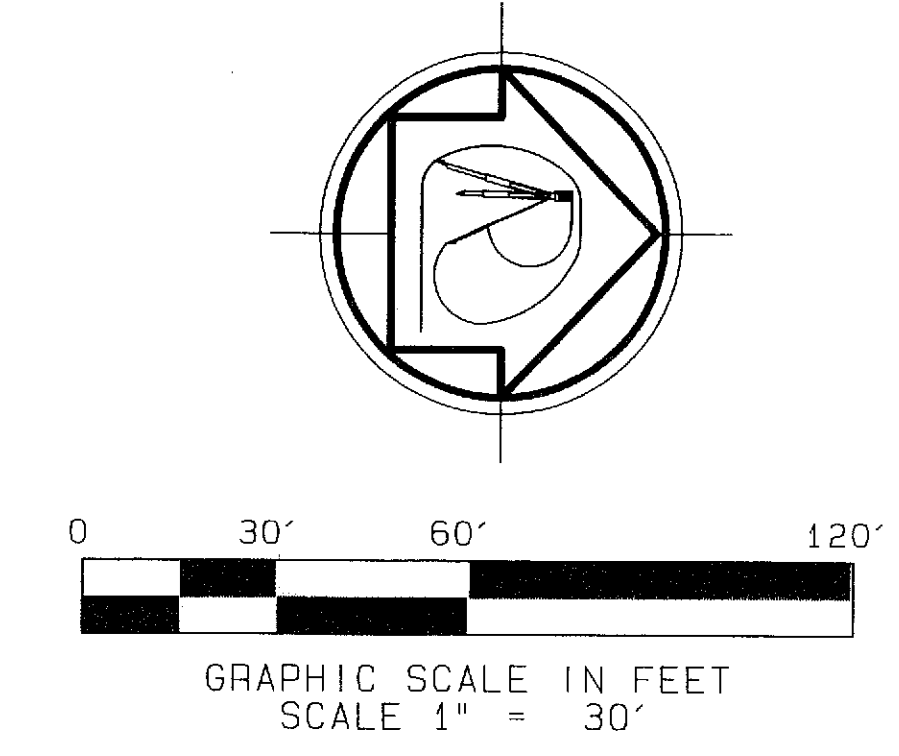


HAMMON PARK REPLAT NO. 1

BEING A REPLAT OF A PORTION OF HAMMON PARK, ACCORDING TO THE PLAT THEREOF, RECORDED IN PLAT BOOK 109, PAGES 126 AND 127, OF THE PUBLIC RECORDS OF PALM BEACH COUNTY, FLORIDA. LYING IN SECTION 21, TOWNSHIP 44 SOUTH, RANGE 43 EAST, CITY OF LAKE WORTH, PALM BEACH COUNTY, FLORIDA.

166



HAMMON PARK REPLAT NO. 1	
THIS INSTRUMENT WAS PREPARED BY RICHARD H. SMITH PROFESSIONAL SURVEYOR AND MAPPER FLORIDA LICENSE NUMBER LS 5239 IN AND FOR THE OFFICE OF:	
RICHARD H. SMITH, INC. SURVEYING AND MAPPING FLORIDA LICENSE NUMBER LB 7667 rsmithsurvey@bellsouth.net 6748 LAS COLINAS STREET LAKE WORTH, FL 33463 (561) 536-8191	CADD 1120P2 PROJECT NUMBER 1120
	SHEET 2 OF 2

BLOCK 18
PALM BEACH FARMS COMPANY NO. 2
LUCERNE TOWNSITE
PLAT BOOK 2, PAGES 29 - 40

LOTS 1 - 20, BLOCK 20
(ORB 17440, PAGE 0545)

BLOCK 20
PALM BEACH FARMS COMPANY NO. 2
LUCERNE TOWNSITE
PLAT BOOK 2, PAGES 29 - 40

WEST 25' OF LOTS 1 - 9 LESSED OUT
(ORB 12074, PAGE 1555)

LOTS 1 - 9, BLOCK 50
(ORB 12074, PAGE 1555)

BLOCK 50
PALM BEACH FARMS COMPANY NO. 2
LUCERNE TOWNSITE
PLAT BOOK 2, PAGES 29 - 40

HAMMON PARK
PLAT BOOK 109,
PAGES 126 AND 127